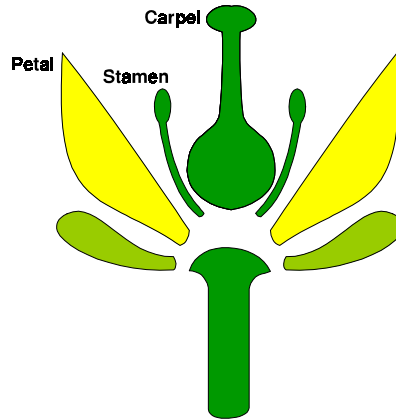


Score
/15

Year 7 / Cells / HW3 Reproduction in flowering plants

Here is a diagram of a tulip flower which has been dissected.



1. Label the flower with the following terms (7):

anther filament sepal stigma ovary style stem

2. What is the function of the stamen? _____ (1)

3. What is the function of the carpel? _____ (1)

4. Is the tulip insect pollinated or wind pollinated? Give a reason for your answer. (2)

5. Why don't all flowers have nectaries? (1) _____

6. On the reverse of this sheet, draw and label a diagram to show how fertilization takes place in the flower. (3)